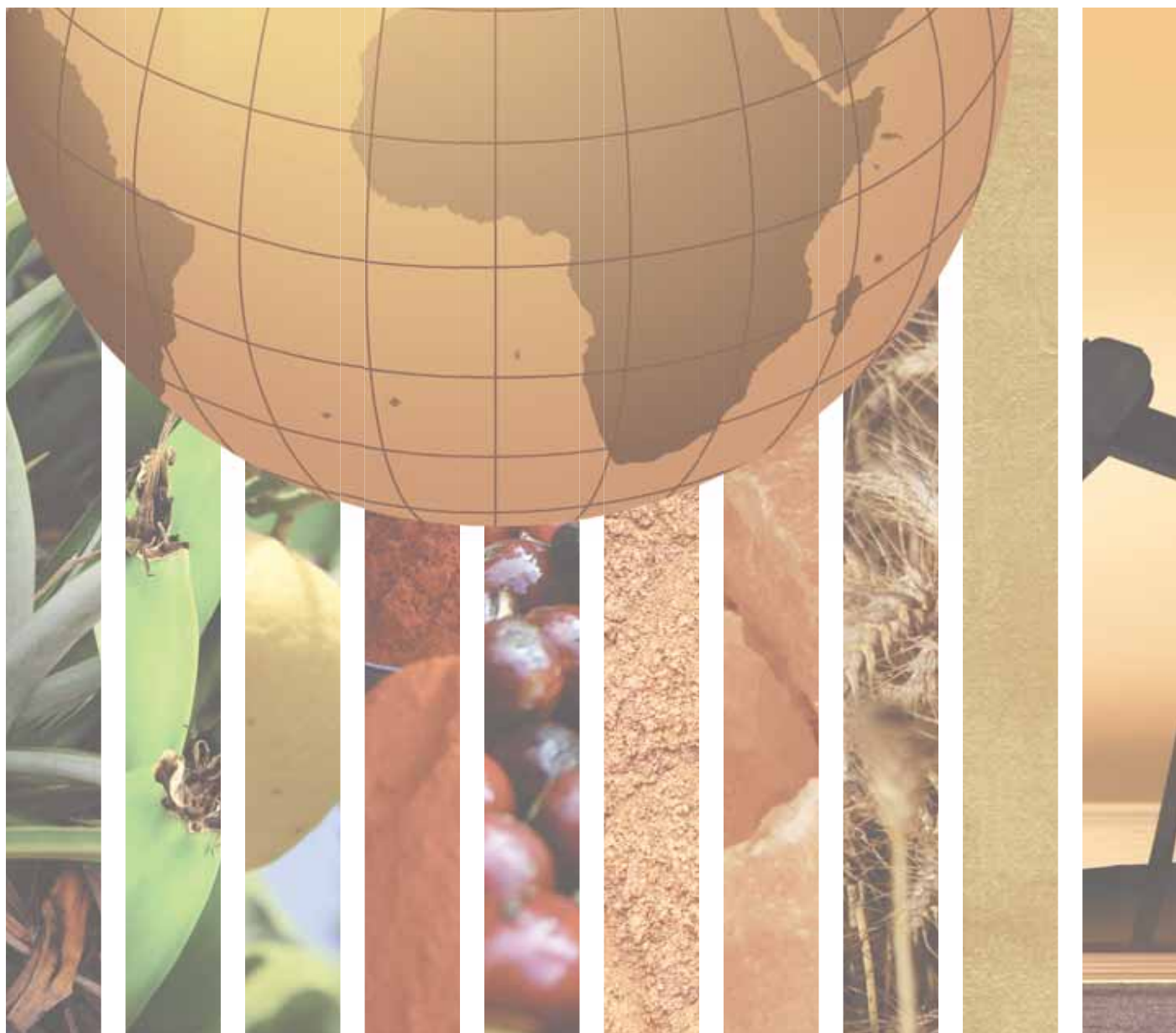


NORTHERN AFRICA





ALGERIA		EGYPT	
GENERAL INFORMATION		GENERAL INFORMATION	
Total area (square kilometres), 2009	2,381,740	Total area (square kilometres), 2009	1,001,450
Agricultural area (as a percentage of total area), 2009	17	Agricultural area (as a percentage of total area), 2009	4
Population (1,000 inhabitants), 2010	35,468	Population (1,000 inhabitants), 2010	81,121
Labour force (1,000 workers), 2010	14,968	Labour force (1,000 workers), 2010	26,383
Women in labour force (as a percentage of total labour force), 2010	34	Women in labour force (as a percentage of total labour force), 2010	26
Labour force in agriculture (as a percentage of total labour force), 2010	21	Labour force in agriculture (as a percentage of total labour force), 2010	25
Women in agriculture (as a percentage of labour force in agriculture), 2010	53	Women in agriculture (as a percentage of labour force in agriculture), 2010	40
Gross Domestic Product (GDP) (in millions of US\$), 2010	159,914	Gross Domestic Product (GDP) (in millions of US\$), 2010	214,406
GDP by economic activity (as a percentage of GDP), 2009 (agriculture / industry / services)	8/62/30	GDP by economic activity (as a percentage of GDP), 2009 (agriculture / industry / services)	14/38/49
COMMODITY EXPORT DEPENDENCE		COMMODITY EXPORT DEPENDENCE	
Commodity exports (in millions of US\$ and as a percentage of merchandise exports), 2009-2010	50,696 (99%)	Commodity exports (in millions of US\$ and as a percentage of merchandise exports), 2009-2010	14,685 (58%)
Commodity exports (as a percentage of GDP), 2009-2010	34	Commodity exports (as a percentage of GDP), 2009-2010	7
Exports by commodity groups (as a percentage of total commodity exports), 2009-2010		Exports by commodity groups (as a percentage of total commodity exports), 2009-2010	
All food items	–	All food items	29
Agricultural raw materials	–	Agricultural raw materials	4
Fuels	97	Fuels	49
Ores, metals, precious stones and non-monetary gold	3	Ores, metals, precious stones and non-monetary gold	18
Three leading commodity exports (as a percentage of commodity exports), 2009-2010	90	Three leading commodity exports (as a percentage of commodity exports), 2009-2010	42
(333) Petroleum oils, oils from bitumin. materials, crude	50	(334) Petroleum oils or bituminous minerals > 70 % oil	17
(343) Natural gas, whether or not liquefied	30	(343) Natural gas, whether or not liquefied	14
(334) Petroleum oils or bituminous minerals > 70 % oil	10	(333) Petroleum oils, oils from bitumin. materials, crude	11
Leading destination markets for commodity exports (as a percentage of commodity exports), 2009-2010	87	Leading destination markets for commodity exports (as a percentage of commodity exports), 2009-2010	49
EU (27), United States, Canada, Turkey, Brazil	48/25/6/4/4	EU (27), India, Saudi Arabia, Jordan, Syrian Arab Republic	28/8/5/4/4
Export concentration ratio	(2000) 0.5147 (2010) 0.5588	Export concentration ratio	(2000) 0.3141 (2010) 0.1326
Membership in international commodity bodies	IGC, IOOC	Membership in international commodity bodies	IGC, ICAC, IOOC, ISO, ITTO
FOOD SECURITY		FOOD SECURITY	
Commodity import value (in millions of US\$ and as a percentage of merchandise import value), 2009-2010	8,396 (21%)	Commodity import value (in millions of US\$ and as a percentage of merchandise import value), 2009-2010	18,454 (38%)
Net food imports (in millions of US\$), 2010	6,364	Net food imports (in millions of US\$), 2010	5,789
MDG 1.1: Percentage of population below 1US\$ (PPP) per day, 1990/92 and 2007/09	7 - n.a.	MDG 1.1: Percentage of population below 1US\$ (PPP) per day, 1990/92 and 2007/09	5 - 2
MDG 1.9: Percentage of the population undernourished, 1991 and 2007	5 - 5	MDG 1.9: Percentage of the population undernourished, 1991 and 2007	5 - 5



LIBYA		MOROCCO	
GENERAL INFORMATION		GENERAL INFORMATION	
Total area (square kilometres), 2009	1,759,540	Total area (square kilometres), 2009	446,550
Agricultural area (as a percentage of total area), 2009	9	Agricultural area (as a percentage of total area), 2009	67
Population (1,000 inhabitants), 2010	6,355	Population (1,000 inhabitants), 2010	31,951
Labour force (1,000 workers), 2010	2,334	Labour force (1,000 workers), 2010	11,798
Women in labour force (as a percentage of total labour force), 2010	25	Women in labour force (as a percentage of total labour force), 2010	25
Labour force in agriculture (as a percentage of total labour force), 2010	3	Labour force in agriculture (as a percentage of total labour force), 2010	26
Women in agriculture (as a percentage of labour force in agriculture), 2010	70	Women in agriculture (as a percentage of labour force in agriculture), 2010	48
Gross Domestic Product (GDP) (in millions of US\$), 2010	71,670	Gross Domestic Product (GDP) (in millions of US\$), 2010	90,913
GDP by economic activity (as a percentage of GDP), 2009 (agriculture / industry / services)	3/72/25	GDP by economic activity (as a percentage of GDP), 2009 (agriculture / industry / services)	14/27/59
COMMODITY EXPORT DEPENDENCE		COMMODITY EXPORT DEPENDENCE	
Commodity exports (in millions of US\$ and as a percentage of merchandise exports), 2009-2010	40,429 (97%)	Commodity exports (in millions of US\$ and as a percentage of merchandise exports), 2009-2010	5,998 (38%)
Commodity exports (as a percentage of GDP), 2009-2010	62	Commodity exports (as a percentage of GDP), 2009-2010	7
Exports by commodity groups (as a percentage of total commodity exports), 2009-2010		Exports by commodity groups (as a percentage of total commodity exports), 2009-2010	
All food items	–	All food items	59
Agricultural raw materials	–	Agricultural raw materials	4
Fuels	99	Fuels	10
Ores, metals, precious stones and non-monetary gold	1	Ores, metals, precious stones and non-monetary gold	27
Three leading commodity exports (as a percentage of commodity exports), 2009-2010	97	Three leading commodity exports (as a percentage of commodity exports), 2009-2010	49
(333) Petroleum oils, oils from bitumin. materials, crude	81	(03) Fishery products	22
(343) Natural gas, whether or not liquefied	8	(054) Vegetables	14
(334) Petroleum oils or bituminous minerals > 70 % oil	8	(272) Crude fertilizers (excluding those of division 56)	13
Leading destination markets for commodity exports (as a percentage of commodity exports), 2009-2010	93	Leading destination markets for commodity exports (as a percentage of commodity exports), 2009-2010	70
EU (27), China, United States, Turkey, Tunisia	78/7/5/2/1	EU (27), United States, Russian Federation, Japan, Brazil	54/6/5/3/2
Export concentration ratio	(2000) 0.7774 (2010) 0.7984	Export concentration ratio	(2000) 0.1766 (2010) 0.1583
Membership in international commodity bodies	IOOC	Membership in international commodity bodies	IGC, ILZSG, IOOC, ISO
FOOD SECURITY		FOOD SECURITY	
Commodity import value (in millions of US\$ and as a percentage of merchandise import value), 2009-2010	6,388 (28%)	Commodity import value (in millions of US\$ and as a percentage of merchandise import value), 2009-2010	13,058 (38%)
Net food imports (in millions of US\$), 2010	4,030	Net food imports (in millions of US\$), 2010	457
MDG 1.1: Percentage of population below 1US\$ (PPP) per day, 1990/92 and 2007/09	n.a.	MDG 1.1: Percentage of population below 1US\$ (PPP) per day, 1990/92 and 2007/09	3 - 3
MDG 1.9: Percentage of the population undernourished, 1991 and 2007	5 - 5	MDG 1.9: Percentage of the population undernourished, 1991 and 2007	6 - 5



SUDAN		TUNISIA	
GENERAL INFORMATION		GENERAL INFORMATION	
Total area (square kilometres), 2009	2,505,810	Total area (square kilometres), 2009	163,610
Agricultural area (as a percentage of total area), 2009	55	Agricultural area (as a percentage of total area), 2009	60
Population (1,000 inhabitants), 2010	43,552	Population (1,000 inhabitants), 2010	10,481
Labour force (1,000 workers), 2010	13,825	Labour force (1,000 workers), 2010	3,917
Women in labour force (as a percentage of total labour force), 2010	31	Women in labour force (as a percentage of total labour force), 2010	28
Labour force in agriculture (as a percentage of total labour force), 2010	52	Labour force in agriculture (as a percentage of total labour force), 2010	21
Women in agriculture (as a percentage of labour force in agriculture), 2010	39	Women in agriculture (as a percentage of labour force in agriculture), 2010	33
Gross Domestic Product (GDP) (in millions of US\$), 2010	69,494	Gross Domestic Product (GDP) (in millions of US\$), 2010	40,259
GDP by economic activity (as a percentage of GDP), 2009 (agriculture / industry / services)	29/29/42	GDP by economic activity (as a percentage of GDP), 2009 (agriculture / industry / services)	11/34/55
COMMODITY EXPORT DEPENDENCE		COMMODITY EXPORT DEPENDENCE	
Commodity exports (in millions of US\$ and as a percentage of merchandise exports), 2009-2010	9,079 (99%)	Commodity exports (in millions of US\$ and as a percentage of merchandise exports), 2009-2010	4,046 (26%)
Commodity exports (as a percentage of GDP), 2009-2010	15	Commodity exports (as a percentage of GDP), 2009-2010	10
Exports by commodity groups (as a percentage of total commodity exports), 2009-2010		Exports by commodity groups (as a percentage of total commodity exports), 2009-2010	
All food items	4	All food items	36
Agricultural raw materials	1	Agricultural raw materials	2
Fuels	88	Fuels	56
Ores, metals, precious stones and non-monetary gold	6	Ores, metals, precious stones and non-monetary gold	6
Three leading commodity exports (as a percentage of commodity exports), 2009-2010	94	Three leading commodity exports (as a percentage of commodity exports), 2009-2010	69
(333) Petroleum oils, oils from bitumin. materials, crude	80	(333) Petroleum oils, oils from bitumin. materials, crude	46
(334) Petroleum oils or bituminous minerals > 70 % oil	8	(421) Fixed vegetable fats & oils, crude, refined, fractio.	14
(971) Gold, non-monetary (excluding gold ores and concentrates)	6	(334) Petroleum oils or bituminous minerals > 70 % oil	9
Leading destination markets for commodity exports (as a percentage of commodity exports), 2009-2010	89	Leading destination markets for commodity exports (as a percentage of commodity exports), 2009-2010	87
China, Japan, Indonesia, United Arab Emirates, India	61/14/6/5/3	EU (27), Libya, United States, Morocco, Switzerland	72/6/5/2/2
Export concentration ratio	(2000) 0.4893 (2010) 0.7579	Export concentration ratio	(2000) 0.2066 (2010) 0.1664
Membership in international commodity bodies	ICAC	Membership in international commodity bodies	ICO, IGC, IOOC, ISO
FOOD SECURITY		FOOD SECURITY	
Commodity import value (in millions of US\$ and as a percentage of merchandise import value), 2009-2010	2,068 (21%)	Commodity import value (in millions of US\$ and as a percentage of merchandise import value), 2009-2010	5,246 (26%)
Net food imports (in millions of US\$), 2010	1,287	Net food imports (in millions of US\$), 2010	271
MDG 1.1: Percentage of population below 1US\$ (PPP) per day, 1990/92 and 2007/09	n.a.	MDG 1.1: Percentage of population below 1US\$ (PPP) per day, 1990/92 and 2007/09	6 - 3
MDG 1.9: Percentage of the population undernourished, 1991 and 2007	39 - 22	MDG 1.9: Percentage of the population undernourished, 1991 and 2007	5 - 5