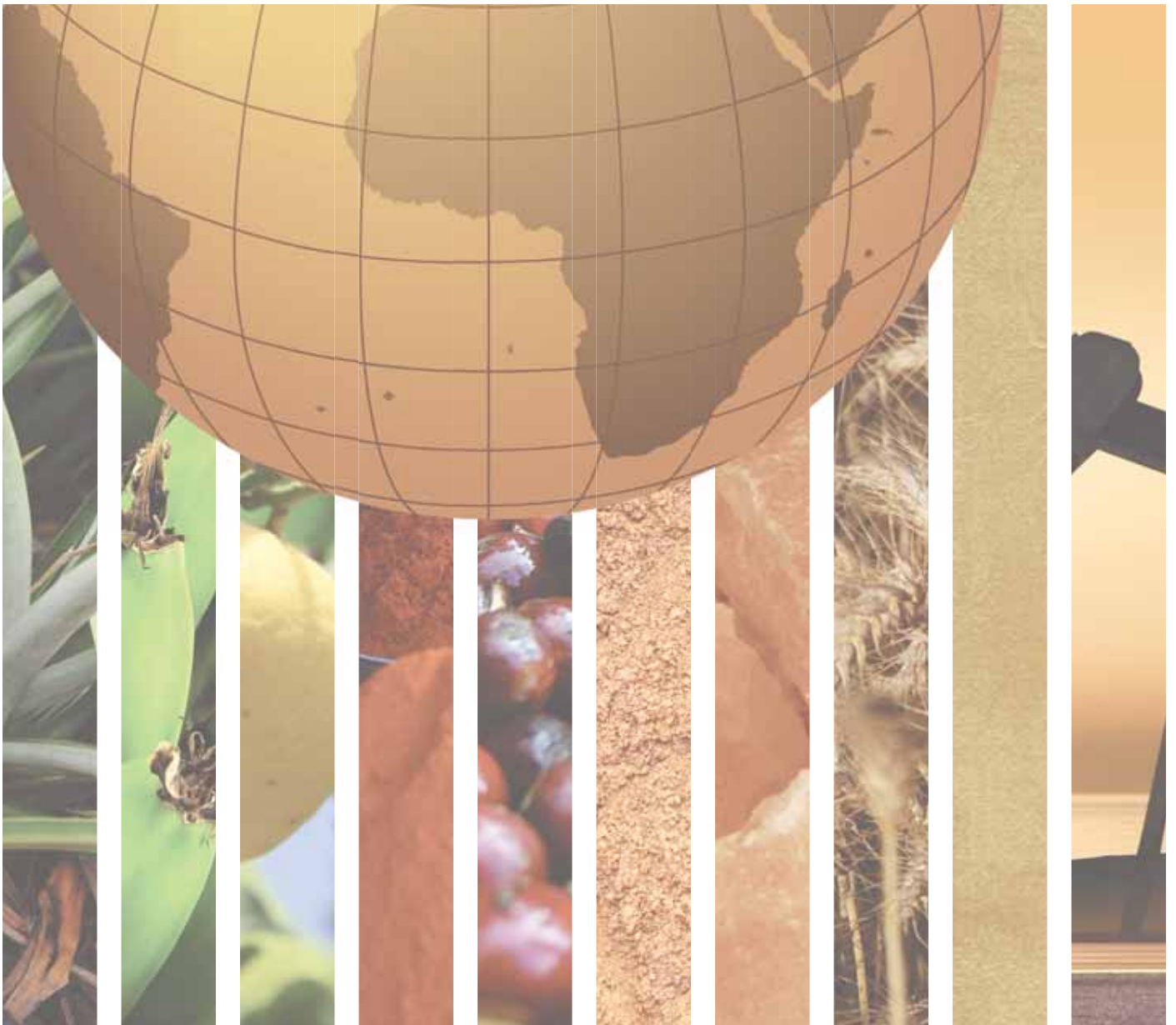


SOUTHERN ASIA





AFGHANISTAN		BANGLADESH	
GENERAL INFORMATION		GENERAL INFORMATION	
Total area (square kilometres), 2009	652,230	Total area (square kilometres), 2009	144,000
Agricultural area (as a percentage of total area), 2009	58	Agricultural area (as a percentage of total area), 2009	64
Population (1,000 inhabitants), 2010	31,412	Population (1,000 inhabitants), 2010	148,692
Labour force (1,000 workers), 2010	10,119	Labour force (1,000 workers), 2010	70,769
Women in labour force (as a percentage of total labour force), 2010	23	Women in labour force (as a percentage of total labour force), 2010	40
Labour force in agriculture (as a percentage of total labour force), 2010	60	Labour force in agriculture (as a percentage of total labour force), 2010	45
Women in agriculture (as a percentage of labour force in agriculture), 2010	32	Women in agriculture (as a percentage of labour force in agriculture), 2010	51
Gross Domestic Product (GDP) (in millions of US\$), 2009	12,853	Gross Domestic Product (GDP) (in millions of US\$), 2010	99,428
GDP by economic activity (as a percentage of GDP), 2009 (agriculture / industry / services)	37/27/36	GDP by economic activity (as a percentage of GDP), 2009 (agriculture / industry / services)	19/29/53
COMMODITY EXPORT DEPENDENCE		COMMODITY EXPORT DEPENDENCE	
Commodity exports (in millions of US\$ and as a percentage of merchandise exports), 2009-2010	174 (53%)	Commodity exports (in millions of US\$ and as a percentage of merchandise exports), 2009-2010	1,511 (8%)
Commodity exports (as a percentage of GDP), 2008-2009	2	Commodity exports (as a percentage of GDP), 2009-2010	2
Exports by commodity groups (as a percentage of total commodity exports), 2009-2010		Exports by commodity groups (as a percentage of total commodity exports), 2009-2010	
All food items	61	All food items	62
Agricultural raw materials	25	Agricultural raw materials	24
Fuels	4	Fuels	9
Ores, metals, precious stones and non-monetary gold	11	Ores, metals, precious stones and non-monetary gold	5
Three leading commodity exports (as a percentage of commodity exports), 2009-2010	61	Three leading commodity exports (as a percentage of commodity exports), 2009-2010	71
(057) Fruits and nuts (excluding oil nuts), fresh or dried	42	(03) Fishery products	48
(292) Crude vegetable materials, n.e.s.	10	(264) Jute, other textile bast fibre, n.e.s., not spun; tow	15
(263) Cotton	9	(334) Petroleum oils or bituminous minerals > 70 % oil	8
Leading destination markets for commodity exports (as a percentage of commodity exports), 2009-2010	81	Leading destination markets for commodity exports (as a percentage of commodity exports), 2009-2010	71
India, Pakistan, Nigeria, EU (27), Russian Federation	34/31/6/5/5	EU (27), United States, India, China, Pakistan	34/14/13/5/5
Export concentration ratio	(2000) 0.3581 (2010) 0.2630	Export concentration ratio	(2000) 0.3745 (2010) 0.3731
Membership in international commodity bodies	–	Membership in international commodity bodies	INBAR, IJSG
FOOD SECURITY		FOOD SECURITY	
Commodity import value (in millions of US\$ and as a percentage of merchandise import value), 2009-2010	1,692 (49%)	Commodity import value (in millions of US\$ and as a percentage of merchandise import value), 2009-2010	8,576 (36%)
Net food imports (in millions of US\$), 2010	545	Net food imports (in millions of US\$), 2010	4,289
MDG 1.1: Percentage of population below 1US\$ (PPP) per day, 1990/92 and 2007/09	n.a.	MDG 1.1: Percentage of population below 1US\$ (PPP) per day, 1990/92 and 2007/09	67 - 22
MDG 1.9: Percentage of the population undernourished, 1991 and 2007	n.a.	MDG 1.9: Percentage of the population undernourished, 1991 and 2007	38 - 26



BHUTAN		INDIA	
GENERAL INFORMATION		GENERAL INFORMATION	
Total area (square kilometres), 2009	38,390	Total area (square kilometres), 2009	3,287,260
Agricultural area (as a percentage of total area), 2009	13	Agricultural area (as a percentage of total area), 2009	55
Population (1,000 inhabitants), 2010	726	Population (1,000 inhabitants), 2010	1,224,614
Labour force (1,000 workers), 2010	335	Labour force (1,000 workers), 2010	495,467
Women in labour force (as a percentage of total labour force), 2010	33	Women in labour force (as a percentage of total labour force), 2010	29
Labour force in agriculture (as a percentage of total labour force), 2010	93	Labour force in agriculture (as a percentage of total labour force), 2010	54
Women in agriculture (as a percentage of labour force in agriculture), 2010	34	Women in agriculture (as a percentage of labour force in agriculture), 2010	32
Gross Domestic Product (GDP) (in millions of US\$), 2010	1,461	Gross Domestic Product (GDP) (in millions of US\$), 2010	1,623,804
GDP by economic activity (as a percentage of GDP), 2009 (agriculture / industry / services)	21/42/38	GDP by economic activity (as a percentage of GDP), 2009 (agriculture / industry / services)	17/28/55
COMMODITY EXPORT DEPENDENCE		COMMODITY EXPORT DEPENDENCE	
Commodity exports (in millions of US\$ and as a percentage of merchandise exports), 2009-2010	288 (51%)	Commodity exports (in millions of US\$ and as a percentage of merchandise exports), 2009-2010	88,233 (43%)
Commodity exports (as a percentage of GDP), 2009-2010	21	Commodity exports (as a percentage of GDP), 2009-2010	6
Exports by commodity groups (as a percentage of total commodity exports), 2009-2010		Exports by commodity groups (as a percentage of total commodity exports), 2009-2010	
All food items	25	All food items	21
Agricultural raw materials	–	Agricultural raw materials	5
Fuels	56	Fuels	33
Ores, metals, precious stones and non-monetary gold	18	Ores, metals, precious stones and non-monetary gold	41
Three leading commodity exports (as a percentage of commodity exports), 2009-2010	76	Three leading commodity exports (as a percentage of commodity exports), 2009-2010	63
(351) Electric current	56	(334) Petroleum oils or bituminous minerals > 70 % oil	32
(075) Spices	11	(667) Pearls, precious & semi-precious stones	23
(682) Copper	9	(281) Iron ore and concentrates	8
Leading destination markets for commodity exports (as a percentage of commodity exports), 2009-2010	99	Leading destination markets for commodity exports (as a percentage of commodity exports), 2009-2010	56
India, Bangladesh	91/8	United Arab Emirates, China, EU (27), China Hong Kong SAR, United States	15/13/13/8/7
Export concentration ratio	(2000) 0.3883 (2010) 0.3251	Export concentration ratio	(2000) 0.1461 (2010) 0.1391
Membership in international commodity bodies	INBAR	Membership in international commodity bodies	INBAR, ICSG, ICO, IGC, ILZSG, IRSG, ICAC, IJSG, ISO, ITTO
FOOD SECURITY		FOOD SECURITY	
Commodity import value (in millions of US\$ and as a percentage of merchandise import value), 2009-2010	245 (36%)	Commodity import value (in millions of US\$ and as a percentage of merchandise import value), 2009-2010	172,844 (58%)
Net food imports (in millions of US\$), 2010	15	Net food imports (in millions of US\$), 2010	- 10,990
MDG 1.1: Percentage of population below 1US\$ (PPP) per day, 1990/92 and 2007/09	n.a. - 26	MDG 1.1: Percentage of population below 1US\$ (PPP) per day, 1990/92 and 2007/09	49 - 42
MDG 1.9: Percentage of the population undernourished, 1991 and 2007	n.a.	MDG 1.9: Percentage of the population undernourished, 1991 and 2007	20 - 19



IRAN (ISLAMIC REPUBLIC OF)		MALDIVES	
GENERAL INFORMATION		GENERAL INFORMATION	
Total area (square kilometres), 2009	1,745,150	Total area (square kilometres), 2009	300
Agricultural area (as a percentage of total area), 2009	28	Agricultural area (as a percentage of total area), 2009	27
Population (1,000 inhabitants), 2010	73,974	Population (1,000 inhabitants), 2010	316
Labour force (1,000 workers), 2010	30,278	Labour force (1,000 workers), 2010	151
Women in labour force (as a percentage of total labour force), 2010	30	Women in labour force (as a percentage of total labour force), 2010	42
Labour force in agriculture (as a percentage of total labour force), 2010	22	Labour force in agriculture (as a percentage of total labour force), 2010	15
Women in agriculture (as a percentage of labour force in agriculture), 2010	46	Women in agriculture (as a percentage of labour force in agriculture), 2010	39
Gross Domestic Product (GDP) (in millions of US\$), 2010	395,910	Gross Domestic Product (GDP) (in millions of US\$), 2009	1,278
GDP by economic activity (as a percentage of GDP), 2009 (agriculture / industry / services)	9/44/47	GDP by economic activity (as a percentage of GDP), 2009 (agriculture / industry / services)	5/17/78
COMMODITY EXPORT DEPENDENCE		COMMODITY EXPORT DEPENDENCE	
Commodity exports (in millions of US\$ and as a percentage of merchandise exports), 2009-2010	79,554 (91%)	Commodity exports (in millions of US\$ and as a percentage of merchandise exports), 2009-2010	172 (93%)
Commodity exports (as a percentage of GDP), 2009-2010	21	Commodity exports (as a percentage of GDP), 2008-2009	19
Exports by commodity groups (as a percentage of total commodity exports), 2009-2010		Exports by commodity groups (as a percentage of total commodity exports), 2009-2010	
All food items	3	All food items	97
Agricultural raw materials	–	Agricultural raw materials	–
Fuels	93	Fuels	–
Ores, metals, precious stones and non-monetary gold	4	Ores, metals, precious stones and non-monetary gold	2
Three leading commodity exports (as a percentage of commodity exports), 2009-2010	92	Three leading commodity exports (as a percentage of commodity exports), 2009-2010	98
(333) Petroleum oils, oils from bitumin. materials, crude	87	(03) Fishery products	96
(334) Petroleum oils or bituminous minerals > 70 % oil	3	(282) Ferrous waste, scrape; remelting ingots, iron, steel	1
(342) Liquefied propane and butane	2	(288) Non-ferrous base metal waste and scrap, n.e.s.	1
Leading destination markets for commodity exports (as a percentage of commodity exports), 2009-2010	75	Leading destination markets for commodity exports (as a percentage of commodity exports), 2009-2010	92
EU (27), China, Japan, India, Taiwan Province of China	21/17/16/13/8	EU (27), Thailand, Sri Lanka, Japan, Iran (Islamic Republic of)	40/37/9/4/2
Export concentration ratio	(2000) 0.8016 (2010) 0.7502	Export concentration ratio	(2000) 0.2736 (2010) 0.7519
Membership in international commodity bodies	IGC, ILZSG, ICAC, IOOC, ISO	Membership in international commodity bodies	–
FOOD SECURITY		FOOD SECURITY	
Commodity import value (in millions of US\$ and as a percentage of merchandise import value), 2009-2010	13,610 (24%)	Commodity import value (in millions of US\$ and as a percentage of merchandise import value), 2009-2010	422 (41%)
Net food imports (in millions of US\$), 2010	4,724	Net food imports (in millions of US\$), 2010	4
MDG 1.1: Percentage of population below 1US\$ (PPP) per day, 1990/92 and 2007/09	4 - 2	MDG 1.1: Percentage of population below 1US\$ (PPP) per day, 1990/92 and 2007/09	28 - 2
MDG 1.9: Percentage of the population undernourished, 1991 and 2007	5 - 5	MDG 1.9: Percentage of the population undernourished, 1991 and 2007	9 - 10



NEPAL		PAKISTAN	
GENERAL INFORMATION		GENERAL INFORMATION	
Total area (square kilometres), 2009	147,180	Total area (square kilometres), 2009	796,100
Agricultural area (as a percentage of total area), 2009	29	Agricultural area (as a percentage of total area), 2009	33
Population (1,000 inhabitants), 2010	29,959	Population (1,000 inhabitants), 2010	173,593
Labour force (1,000 workers), 2010	12,981	Labour force (1,000 workers), 2010	62,760
Women in labour force (as a percentage of total labour force), 2010	46	Women in labour force (as a percentage of total labour force), 2010	21
Labour force in agriculture (as a percentage of total labour force), 2010	93	Labour force in agriculture (as a percentage of total labour force), 2010	39
Women in agriculture (as a percentage of labour force in agriculture), 2010	48	Women in agriculture (as a percentage of labour force in agriculture), 2010	30
Gross Domestic Product (GDP) (in millions of US\$), 2010	16,167	Gross Domestic Product (GDP) (in millions of US\$), 2010	176,888
GDP by economic activity (as a percentage of GDP), 2009 (agriculture / industry / services)	33/16/52	GDP by economic activity (as a percentage of GDP), 2009 (agriculture / industry / services)	21/24/55
COMMODITY EXPORT DEPENDENCE		COMMODITY EXPORT DEPENDENCE	
Commodity exports (in millions of US\$ and as a percentage of merchandise exports), 2009-2010	264 (31%)	Commodity exports (in millions of US\$ and as a percentage of merchandise exports), 2009-2010	4,791 (25%)
Commodity exports (as a percentage of GDP), 2009-2010	2	Commodity exports (as a percentage of GDP), 2009-2010	3
Exports by commodity groups (as a percentage of total commodity exports), 2009-2010		Exports by commodity groups (as a percentage of total commodity exports), 2009-2010	
All food items	72	All food items	67
Agricultural raw materials	11	Agricultural raw materials	8
Fuels	–	Fuels	20
Ores, metals, precious stones and non-monetary gold	17	Ores, metals, precious stones and non-monetary gold	5
Three leading commodity exports (as a percentage of commodity exports), 2009-2010	44	Three leading commodity exports (as a percentage of commodity exports), 2009-2010	67
(054) Vegetables	25	(042) Rice	42
(292) Crude vegetable materials, n.e.s.	10	(334) Petroleum oils or bituminous minerals > 70 % oil	20
(075) Spices	9	(263) Cotton	5
Leading destination markets for commodity exports (as a percentage of commodity exports), 2009-2010	90	Leading destination markets for commodity exports (as a percentage of commodity exports), 2009-2010	53
India, Bangladesh, China, United States, Singapore	65/20/2/2/1	Afghanistan, United Arab Emirates, EU (27), China, Saudi Arabia	21/14/7/6/5
Export concentration ratio	(2000) 0.3235 (2010) 0.1547	Export concentration ratio	(2000) 0.2147 (2010) 0.1994
Membership in international commodity bodies	INBAR, ITTO	Membership in international commodity bodies	IGC, ICAC, ISO
FOOD SECURITY		FOOD SECURITY	
Commodity import value (in millions of US\$ and as a percentage of merchandise import value), 2009-2010	1,880 (42%)	Commodity import value (in millions of US\$ and as a percentage of merchandise import value), 2009-2010	17,185 (50%)
Net food imports (in millions of US\$), 2010	459	Net food imports (in millions of US\$), 2010	1,363
MDG 1.1: Percentage of population below 1US\$ (PPP) per day, 1990/92 and 2007/09	68 - 55	MDG 1.1: Percentage of population below 1US\$ (PPP) per day, 1990/92 and 2007/09	65 - 23
MDG 1.9: Percentage of the population undernourished, 1991 and 2007	21 - 17	MDG 1.9: Percentage of the population undernourished, 1991 and 2007	25 - 25


SRI LANKA
GENERAL INFORMATION

Total area (square kilometres), 2009	65,610
Agricultural area (as a percentage of total area), 2009	40
Population (1,000 inhabitants), 2010	20,860
Labour force (1,000 workers), 2010	9,480
Women in labour force (as a percentage of total labour force), 2010	38
Labour force in agriculture (as a percentage of total labour force), 2010	42
Women in agriculture (as a percentage of labour force in agriculture), 2010	37
Gross Domestic Product (GDP) (in millions of US\$), 2010	50,561
GDP by economic activity (as a percentage of GDP), 2009 (agriculture / industry / services)	14/32/55

COMMODITY EXPORT DEPENDENCE

Commodity exports (in millions of US\$ and as a percentage of merchandise exports), 2009-2010	2,833 (37%)
Commodity exports (as a percentage of GDP), 2009-2010	6
Exports by commodity groups (as a percentage of total commodity exports), 2009-2010	
All food items	73
Agricultural raw materials	10
Fuels	–
Ores, metals, precious stones and non-monetary gold	17
Three leading commodity exports (as a percentage of commodity exports), 2009-2010	65
(074) Tea and mate	45
(667) Pearls, precious & semi-precious stones	14
(03) Fishery products	6
Leading destination markets for commodity exports (as a percentage of commodity exports), 2009-2010	49
EU (27), India, Russian Federation, United Arab Emirates, Iran (Islamic Republic of)	24/7/7/6/5
Export concentration ratio	(2000) 0.2398 (2010) 0.2116
Membership in international commodity bodies	INBAR, IRSG

FOOD SECURITY

Commodity import value (in millions of US\$ and as a percentage of merchandise import value), 2009-2010	4,270 (39%)
Net food imports (in millions of US\$), 2010	- 350
MDG 1.1: Percentage of population below 1US\$ (PPP) per day, 1990/92 and 2007/09	15 - 7
MDG 1.9: Percentage of the population undernourished, 1991 and 2007	28 - 20